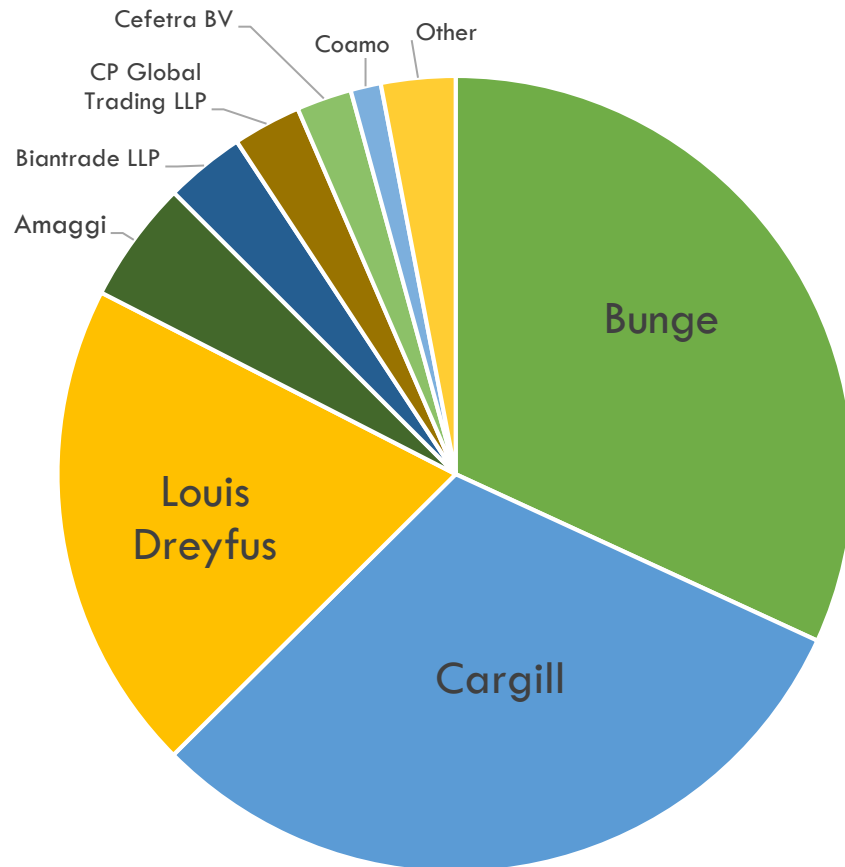


SOY IMPORTS TO FRANCE - BRAZIL

Brazil (2017)
By importing company

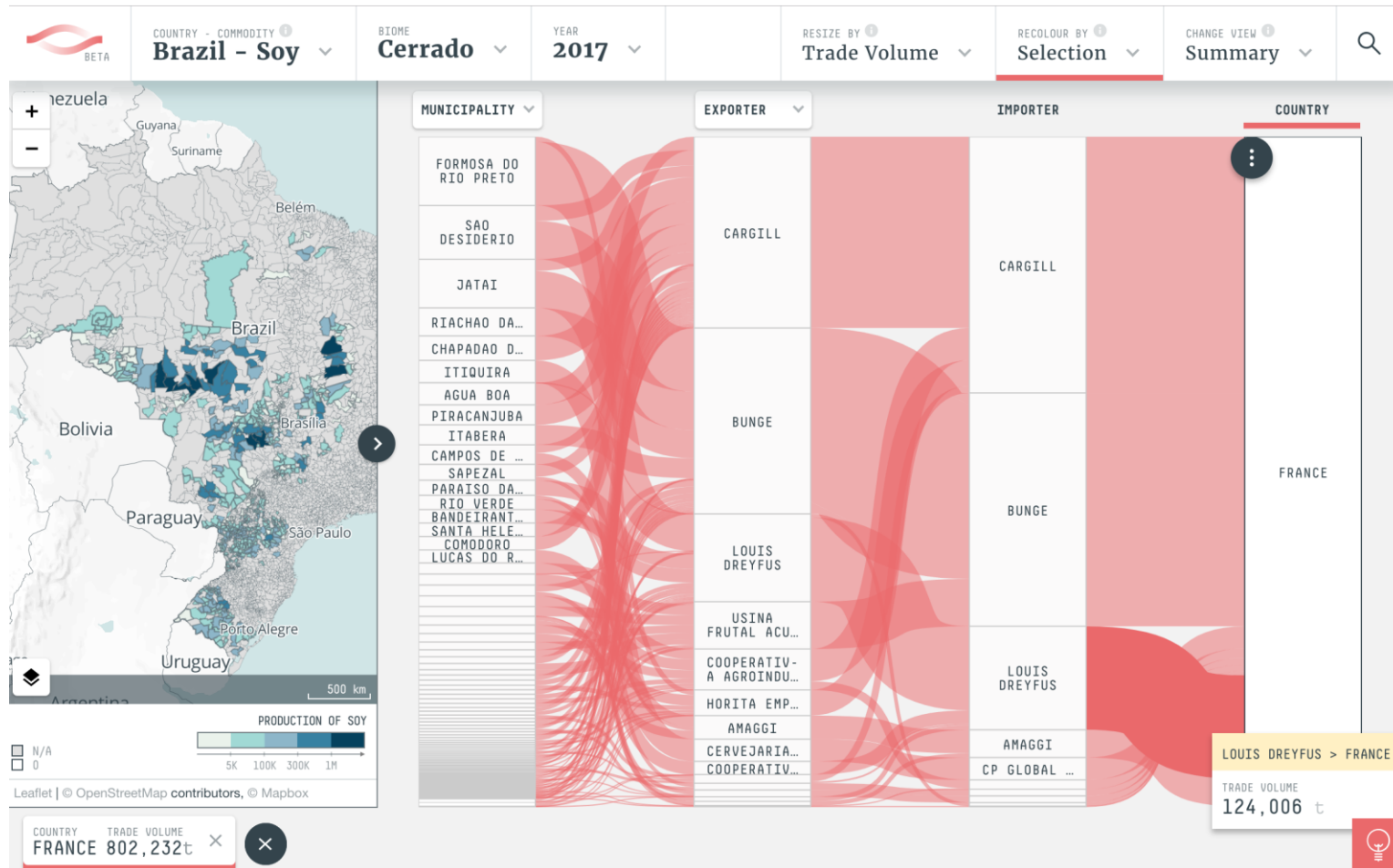


Importing Company	Tons of Soy	Percent
Bunge	586,355	31.9%
Cargill	564,443	30.7%
Louis Dreyfus	367,868	20.0%
Amaggi	91,245	5.0%
Biantrade LLP	59,667	3.2%
CP Global Trading LLP	50,984	2.8%
Cefetra BV	41,240	2.2%
Coamo	22,682	1.2%
Other	55,556	3.0%
Total	1,840,040	

SOY IMPORTS TO FRANCE – BRAZIL

Brazil (2017)

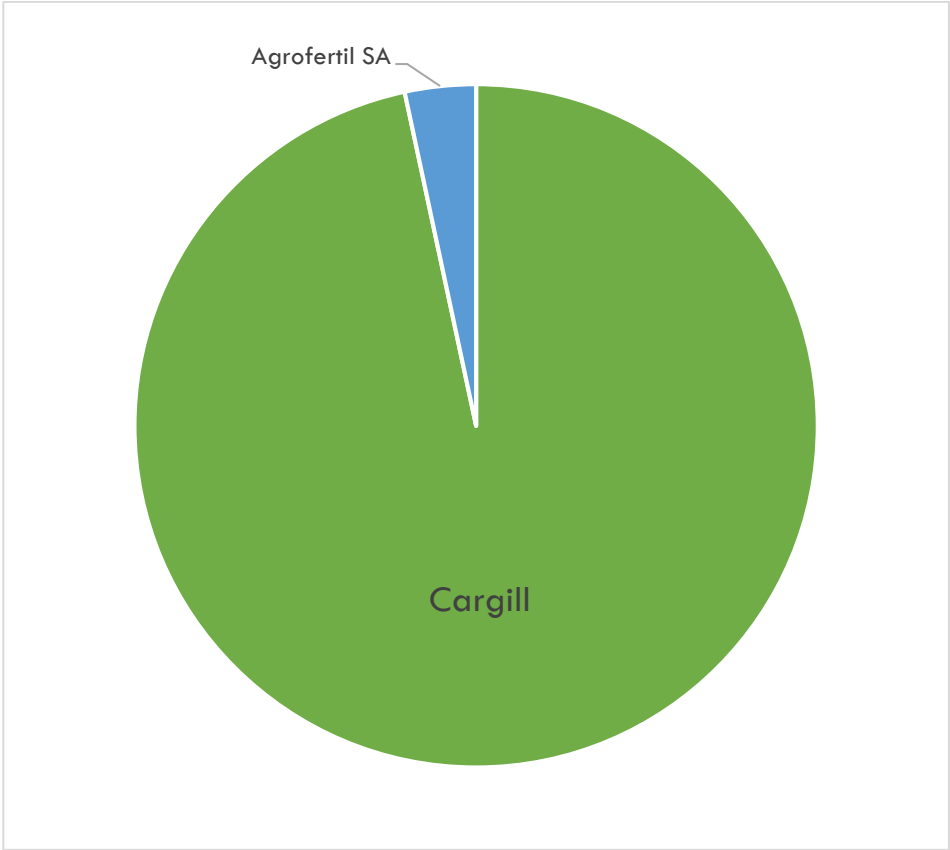
Imports from the Brazilian Cerrado



Source: Trase.earth

SOY IMPORTS TO FRANCE - PARAGUAY

Paraguay (2015)
By importing company



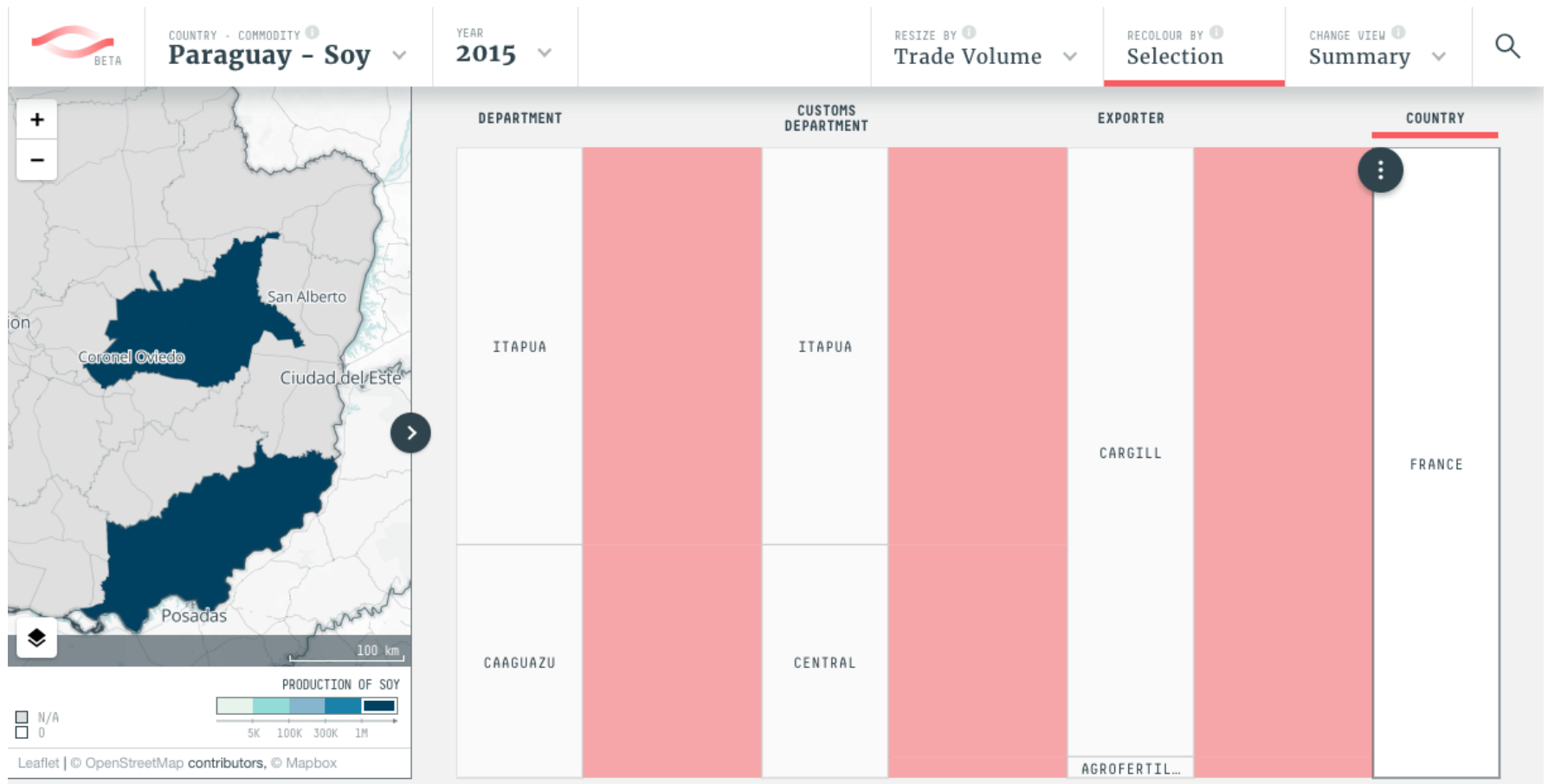
Importing Company	Tons of Soy	Percent
Cargill	142,302	96.6%
Agrofertil SA	4,946	3.4%
Total	147,248	

Source: Trase.earth

SOY IMPORTS TO FRANCE - PARAGUAY

Paraguay (2015)

By importing company



Source: Trase.earth

SOY IMPORTS TO FRANCE - BOLIVIA

Bolivia (2014)
By importing company

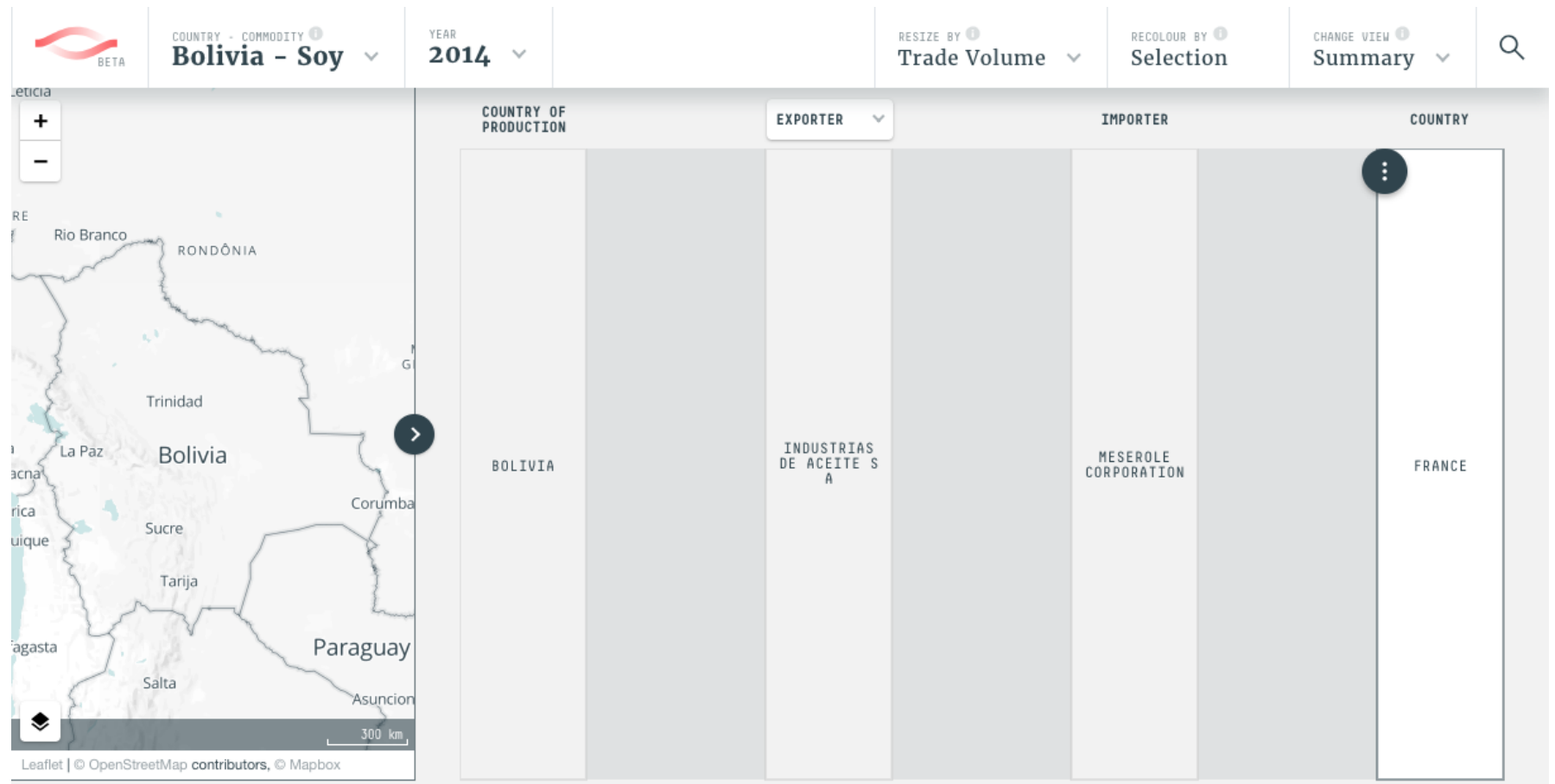
Importing Company	Tons of Soy	Percent
Meserole Corporation	15,904	100.0%
Total	15,904	

Source: Trase.earth

SOY IMPORTS TO FRANCE - BOLIVIA

Bolivia (2014)

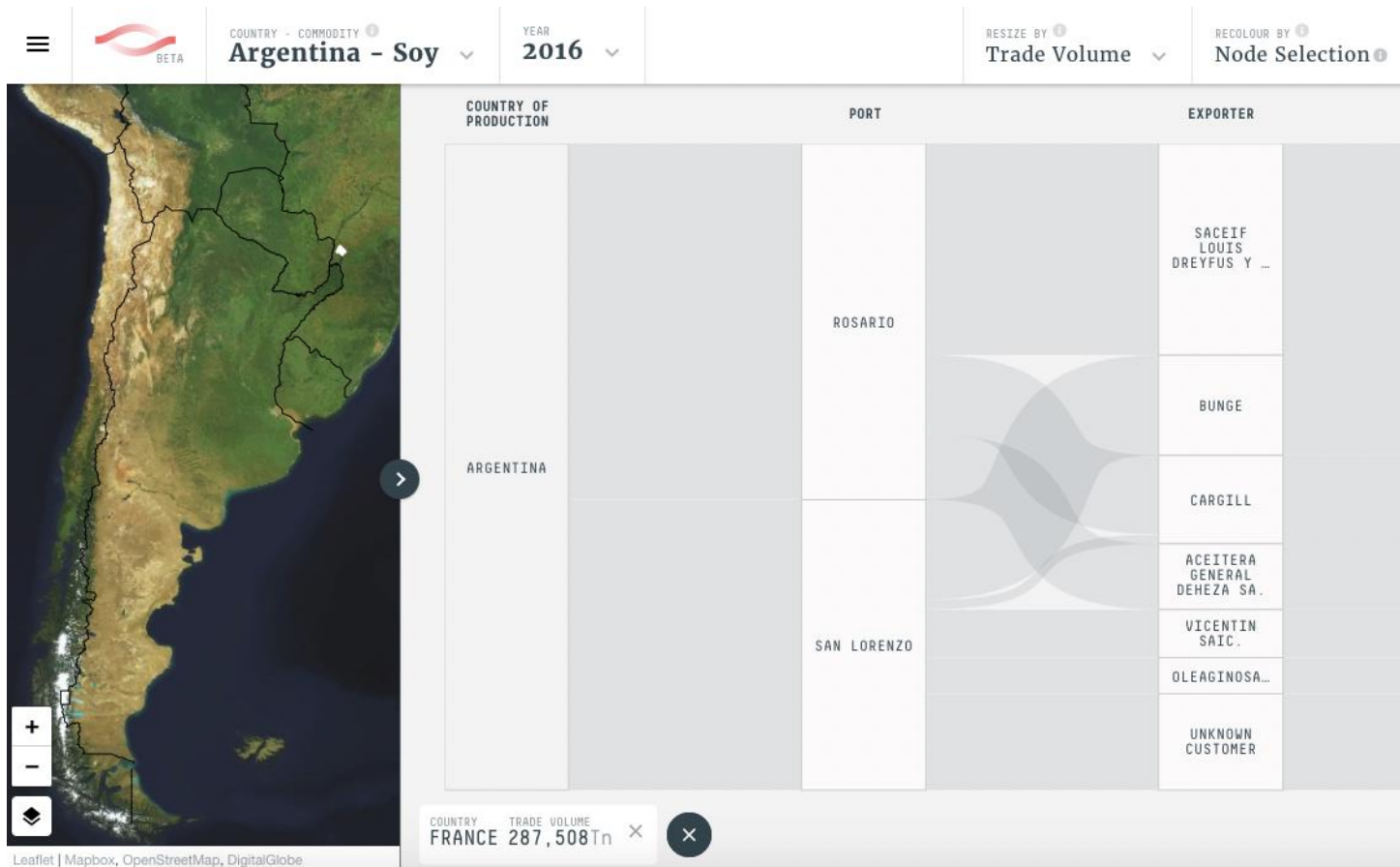
By importing company



Source: Trase.earth

SOY IMPORTS TO FRANCE – ARGENTINA

Argentina (2016)



Source: Trase.earth